

Heili-tunic



Heili means honey (as in person) in Eastern Finland & Karelia dialect. My grandmother was originally from Karelia and hence I chose this name for the tunic.

Size: M

skirt width 56 cm

width under the bust 48 cm

height 55 cm (from top of the collar to hem)

Yarn: Novita Nalle (043) (75% wool, 25% nylon, 100 g = 260 m), 4 balls (= 330 grams)

Needles: 2 mm (Note that I knit loosely so you might want to try 3.5 mm needles to achieve the gauge)

Gauge after steaming (skirt Pattern) 22 stitches and 28 rows = 10 cm

Other accessories: 4 large buttons (diameter 3.5 cm), 2 stitch markers, the needle for sewing seams (& stitch counter).

The tunic is knit tunic in two parts. The hem is knit closed and the yoke is knit horizontally and later attached to the hem. Therefore the only seam is between hem and yoke. The stitches for the button band are picked up from both ends of the yoke. Button band can be altogether omitted.

It is recommended to try on the tunic occasionally while knitting to achieve the best fit.

You can use more or less shapings and knit the tunic shorter if desired. However, always knit the cable patterns thoroughly even when modifying the tunic.

Hem:

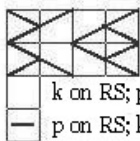
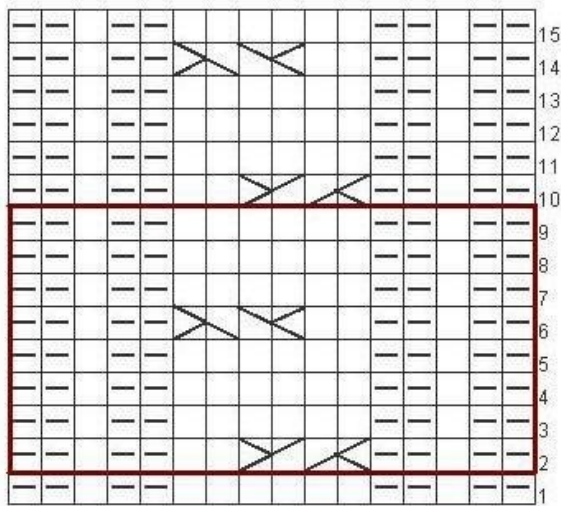
Cast on 264 stitches and join being careful not to twist. Purl the first 8 sts, then repeat the pattern for hem 10 times, purl 16 sts, repeat the hem pattern 10 times and finally purl the remaining 8 sts. (You can also knit the hem flat if you prefer). Place the first stitch marker at the beginning and the second after 132 sts (between the 16 purled stitches).

Repeat the hem chart (rows 2-9) altogether 13 times while shaping according to the bellow instructions.

Shapings:

Decrease always by purling 2 together on both sides of the markers 9 times. The first after you have knit 4 cm from the cast on, ten when you have knit 9 cm, 14 cm, 19 cm, 24 cm, 29 cm and 34 cm. Then Decrease by knitting two stitches together at the both sides of the stitch markers when you have knit 37 cm and 40 cm from the cast on. Note that the exact placement of the shapings isn't crucial and you might want to decrease more or less. After the 7th decrease (at approx. 34 cm you will have to join the two cables to a single knit bar of 12 stitches). You can cable this bar as long as possible or leave it as it is, still decreasing, now by knitting two stitches together as mentioned above. After the last decrease (40 cm) purl all the purled sts p2tog and knit all the cables k2tog, k2, k2tog. Cast off the stitches on the next row.

Hem cable



slip 2 sts onto cable needle, hold in back, k2, k2 from cable needle

slip 2 sts onto cable needle, hold in front, k2, k2 from cable needle

k on RS; p on WS

p on RS; k on WS



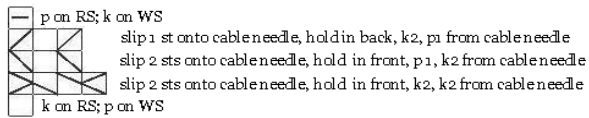
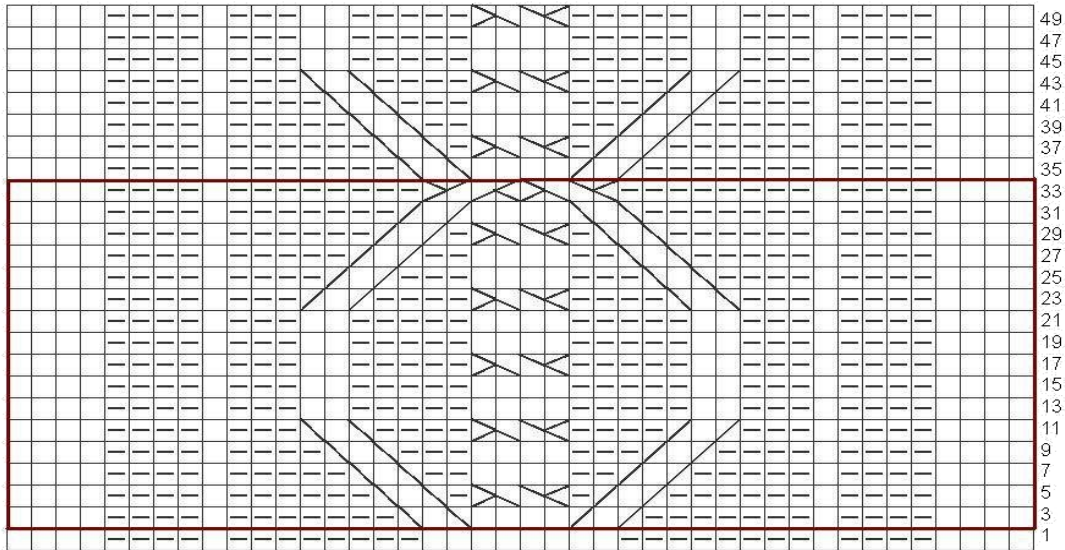
Yoke:

Cast on 44 sts. The edge stitches are knit in garter stitch, the other according to the chart. The pattern has only the right side rows, on the wrong side knit the knitted stitches and purl the purlled ones. On every other row on the wrong side wrap a stitch 12 stitches from the left edge (this ensures better fitting yoke).

The wrapped rows are knit by knitting to 12 last stitches, bringing the yarn to the front, lifting the 12th stitch from the left edge without knitting to the right needle, bringing the yarn to the back side and moving the stitch back to the left needle. Turn the work and continue knitting according to the chart. Remember to purl together the stitch and the wrap on the next wrong side row.

After you have repeated the rows 2-33 10 times, cast off the stitches. If you want to add button bands pick 44 stitches on both ends of the yoke, the cast on and cast off. Knit on the other edge 12 rows in stockinette (edge stitches in garter stitch) and cast off the stitches loosely. On the other edge knit 6 stitches in stockinette (remember the to knit the edge stitches in garter) and then knit the button holes as follows: knit 5 sts, * cast off 4 stitches, knit 6 stitches *, repeat * - * 3 times, cast off 4 stitches and knit 4. Cast on the cast off stitches on the next row. Knit 4 rows and then cast off.

Yoke cable



If you chose not knit button bands simply sew the ends of the yoke together.



Finishing:

Align the parts so that the button band (or the seam) is in the middle of the most central cable of one side of the hem. Sew the hem to the yoke. Personally I crocheted the edges of the sleeves with the same yarn I used for sewing the seam.

My tunic would probably fit me better if I had not done the button bands.

Let me know if you knit tunic!

If you have any questions please contact me **terhi (at) sillylicks.net!**
I'll be happy to help you!

© Terhi Tuominen 2010